

Ultimate Sharpness

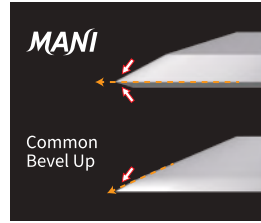
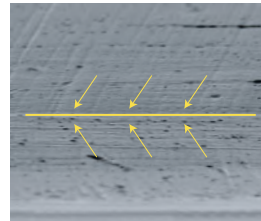


Image of Bevel



MANI crosslapped edge

Bevel Shape (patented)

MANI original bevel shape is applied for the knives. By polishing the blade slightly from the back side, the shape provides excellent sharpness, better usability and better stability on trajectory.

The edge and Bevel generate "Ultimate Sharpness"

Crosslapped Edge

MANI's fine-processing technique has created the crosslapped edge, which provides excellent sharpness and consistent quality. (Crosslapped edge: polishing direction is vertical of the edge)

Color-Coded Handles Allow Easy Identification

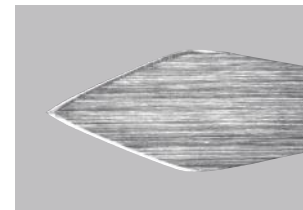
The color is different depending on the tip shape.

Non-Glare Treatment (patented)

To maintain the sharpness, Non-Glare treatment was processed on knives except its edge and back side.



MANI slit knife - front side (Non-Glare)

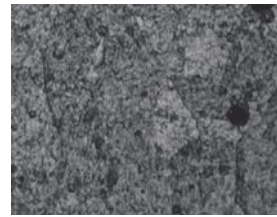


MANI slit knife - back side (without Non-Glare)

Stainless Steel Superior In Safety



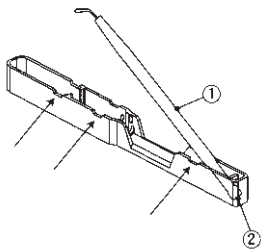
Structure of MANI hard fiber stainless steel



Structure of common stainless steel

MANI's original hard fiber stainless steel (austenite stainless steel) provides reliable strength on the tip and ensure thin but solid edge. (Edge thickness of MANI slit and crescent knife: 0.14mm)

How to Handle the Case



How to Remove the Knife

While taking great care not to let the blade come into contact with any surface, gently pinch and lift section ①.

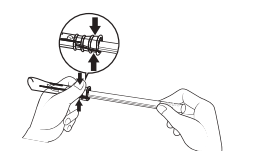
How to Store the Knife

With the blade facing downward, insert section ② fully into the slot. Then, lightly press section ① to secure the knife in place.

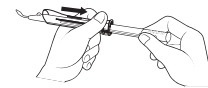
You can also rest the knife in one of the three grooves (indicated by arrows), in a manner similar to using a chopstick rest.

Handling Instructions for Safety Type

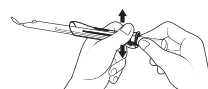
1 How to Expose the Blade



① Pinch the rear end of the cover to release the lock.



② While keeping it pinched, slide the cover backward.



③ Release the cover once it has been slid back fully and locked in place.

2 How to Retract the Blade

While pinching the lock release part at the rear end of the cover, slide the cover all the way forward to retract the blade into the cover.

(※ Follow the blade exposure steps in reverse order.)

CE 0197

MANI, INC.

8-3 KIYOHARA INDUSTRIAL PARK, UTSUNOMIYA,
TOCHIGI, 321-3231, JAPAN
Phone: +81-28-667-7565 / E-mail: seg-ovs@mani.inc /
URL: www.mani.co.jp



Note : Design and specifications are subject to change without notice.

S0012

MANI

The best quality in the world,
to the world.



MANI OPHTHALMIC KNIFE



Straight Knife

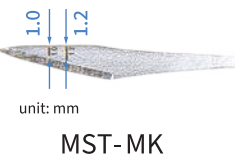
○Main Application: Scleral groove incision, Side port



ORDER No.	Description	6pcs/box
MST00	Straight 0°	
MST15	Straight 15°	
MST22	Straight 22.5°	
MST30	Straight 30°	
MST45	Straight 45°	

Marking Straight Knife

○Main Application: Scleral groove incision, Side port



By placing the lines serving as guides of the side port width in 1.0mm and 1.2 mm part, the operability has been further improved.



ORDER No.	Description	6pcs/box
MST15MK	Straight 15° (Marking)	
MST22MK	Straight 22.5° (Marking)	

Safety Straight Knife

○Main Application: Scleral groove incision, Side port



ORDER No.	Description	6pcs/box
MST15SK	Straight 15° (Safety)	
MST22SK	Straight 22.5° (Safety)	
MST30SK	Straight 30° (Safety)	

Please refer to the page 5 and the back page for Handling Instructions for Safety Type.

Slit Knife

Angle = 45°



○Main Application: Corneal Incision, Scleral Incision



ORDER No.	Description	6pcs/box
MSL10	Slit Angled 1.0mm	
MSL11	Slit Angled 1.1mm	
MSL12	Slit Angled 1.2mm	
MSL13	Slit Angled 1.3mm	
MSL14	Slit Angled 1.4mm	
MSL16	Slit Angled 1.6mm	
MSL18	Slit Angled 1.8mm	
MSL19	Slit Angled 1.9mm	
MSL20	Slit Angled 2.0mm	
MSL21	Slit Angled 2.1mm	
MSL22	Slit Angled 2.2mm	
MSL23	Slit Angled 2.3mm	
MSL24	Slit Angled 2.4mm	
MSL25	Slit Angled 2.5mm	
MSL26	Slit Angled 2.65mm	
MSL27	Slit Angled 2.75mm	
MSL28	Slit Angled 2.8mm	
MSL29	Slit Angled 2.9mm	
MSL30	Slit Angled 3.0mm	
MSL32	Slit Angled 3.2mm	
MSL35	Slit Angled 3.5mm	
MSS10	Slit Straight 1.0mm	
MSS28	Slit Straight 2.8mm	
MSS30	Slit Straight 3.0mm	
MSS32	Slit Straight 3.2mm	

Short-Head Slit Knife

○Main Application: Corneal Incision, Scleral Incision

Angle = 45°



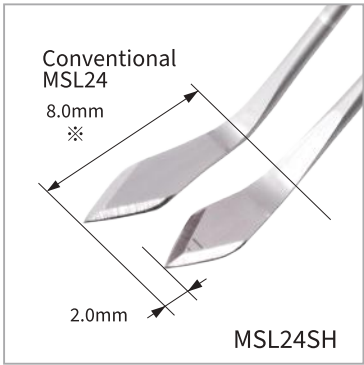
MSL-SH
(with Marking)



Actual size

ORDER No.	Description	6pcs/box
MSL20SH	Slit Angled 2.0mm (Short-Head)	
MSL21SH	Slit Angled 2.1mm (Short-Head)	
MSL22SH	Slit Angled 2.2mm (Short-Head)	
MSL23SH	Slit Angled 2.3mm (Short-Head)	
MSL24SH	Slit Angled 2.4mm (Short-Head)	
MSL25SH	Slit Angled 2.5mm (Short-Head)	
MSL26SH	Slit Angled 2.65mm (Short-Head)	
MSL27SH	Slit Angled 2.75mm (Short-Head)	
MSL28SH	Slit Angled 2.8mm (Short-Head)	
MSL29SH	Slit Angled 2.9mm (Short-Head)	
MSL30SH	Slit Angled 3.0mm (Short-Head)	

Comparison with conventional knives

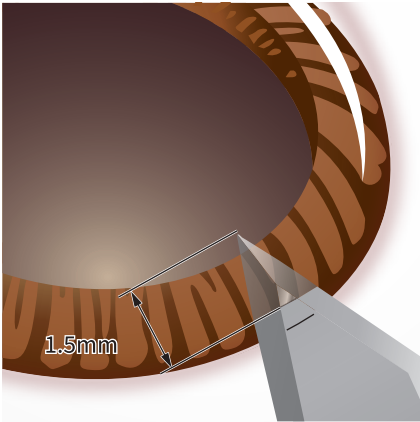


Extreme Sharpness, Simple Operation, High Visibility

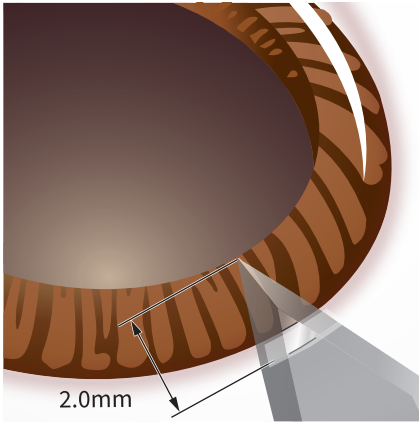
Position of Knife Angle moved 2mm towards the tip and the blade became smaller with extreme sharpness as our conventional models.Effective for a patient who has sunken/deep-set eye (enophthalmos) or narrow lid fissure. Less possibility of contacting with eye speculum and drapes. In addition, marking lines at 1.5mm and 2.0mm from the blade tip enable simple operation for creating tunnel.

※MSL20SH ~ (8mm→6mm)
※MSL25SH ~ (9mm→7mm)

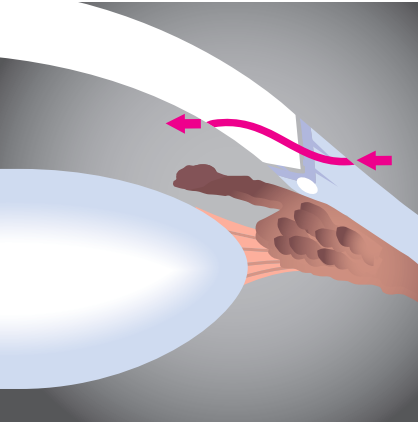
Example of use of the marking lines



Corneal Incision



Scleral Incision



Perforation towards anterior chamber using the marking lines as an indicator.

Safety Slit Knife

○Main Application: Corneal Incision, Scleral Incision

Angle = 45°



MSL-SK



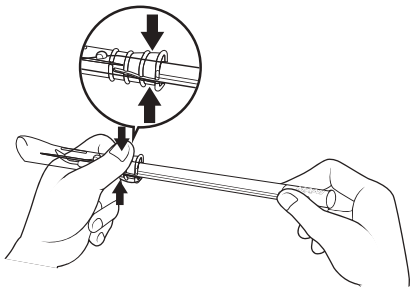
Actual size

ORDER No.	Description	6pcs/box
MSL10SK	Slit Angled 1.0mm (Safety)	
MSL12SK	Slit Angled 1.2mm (Safety)	
MSL14SK	Slit Angled 1.4mm (Safety)	
MSL18SK	Slit Angled 1.8mm (Safety)	
MSL20SK	Slit Angled 2.0mm (Safety)	
MSL22SK	Slit Angled 2.2mm (Safety)	
MSL23SK	Slit Angled 2.3mm (Safety)	
MSL24SK	Slit Angled 2.4mm (Safety)	
MSL25SK	Slit Angled 2.5mm (Safety)	
MSL26SK	Slit Angled 2.65mm (Safety)	
MSL27SK	Slit Angled 2.75mm (Safety)	
MSL28SK	Slit Angled 2.8mm (Safety)	
MSL30SK	Slit Angled 3.0mm (Safety)	
MSL32SK	Slit Angled 3.2mm (Safety)	

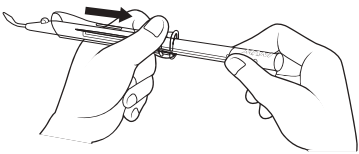
Please refer to the below and the back page for Handling Instructions for Safety Type.

Handling Instructions for Safety Type

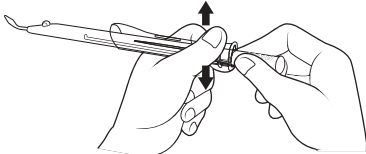
1 How to Expose the Blade



①Pinch the rear end of the cover to release the lock.



②While keeping it pinched,slide the cover backward.



③Release the cover once it has been slid back fully and locked in place.

2 How to Retract the Blade

While pinching the lock release part at the rear end of the cover,slide the cover all the way forward to retract the blade into the cover. (※Follow the blade exposure steps in reverse order.)

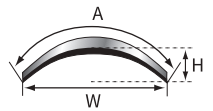
Arched Knife

○Main Application: Corneal Incision

Angle = 45°



MSL-AB



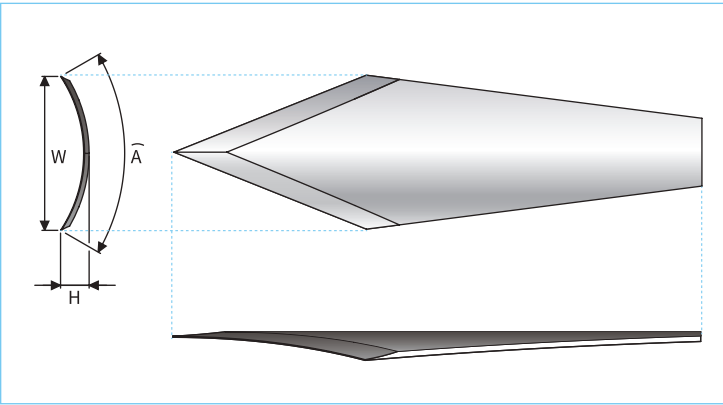
Actual size

ORDER No.	Description	6pcs/box
MSL18AB	Slit Angled 1.8mm Arched (A 1.8mm W 1.7mm H 0.3mm)	
MSL20AB	Slit Angled 2.0mm Arched (A 2.0mm W 1.85mm H 0.35mm)	
MSL22AB	Slit Angled 2.2mm Arched (A 2.2mm W 2.05mm H 0.35mm)	
MSL23AB	Slit Angled 2.3mm Arched (A 2.3mm W 2.2mm H 0.35mm)	
MSL25AB	Slit Angled 2.5mm Arched (A 2.5mm W 2.4mm H 0.35mm)	
MSL26AB	Slit Angled 2.65mm Arched (A 2.65mm W 2.5mm H 0.35mm)	
MSL28AB	Slit Angled 2.8mm Arched (A 2.8mm W 2.6mm H 0.4mm)	
MSL29AB	Slit Angled 2.9mm Arched (A 2.9mm W 2.7mm H 0.45mm)	
MSL30AB	Slit Angled 3.0mm Arched (A 3.0mm W 2.8mm H 0.45mm)	
MSL32AB	Slit Angled 3.2mm Arched (A 3.2mm W 3.0mm H 0.55mm)	
MSL34AB	Slit Angled 3.4mm Arched (A 3.4mm W 3.2mm H 0.55mm)	

※Better self-sealing incision. Low risk of infection.

Arched Knife is a slit knife designed for clear corneal incision with IOL injector system.

Please refer to the width in order to find your best size. If you are using MSL24 (2.4mm) now, MSL25AB should be the correct choice as its width (W) is 2.4mm. The incision location is different from that of normal "flat" knife because the arched knife has a three-dimensional blade. Please make sure that your Phaco tip and Injector fit properly with the arched knife you chose. We recommend to try the compatibility between the arched knife & your Injector at a wet lab in order to find the right size from our line-up. Please contact us for the case report.



IT IS UNABLE TO MAKE THE WOUND WIDER AFTER THE INCISION BECAUSE OF INCISION SHAPE.
Please read Instruction for Use carefully before use.

Side Port Knife

○Main Application: Side port

Angle = 30° (L) • 45°



MSP



Actual size

ORDER No.	Description	6pcs/box
MSP10	Side Port 1.0mm Angled 45°	
MSP10L	Side Port 1.0mm Angled 30°	

Features of Side Port Knife

Width

Angle

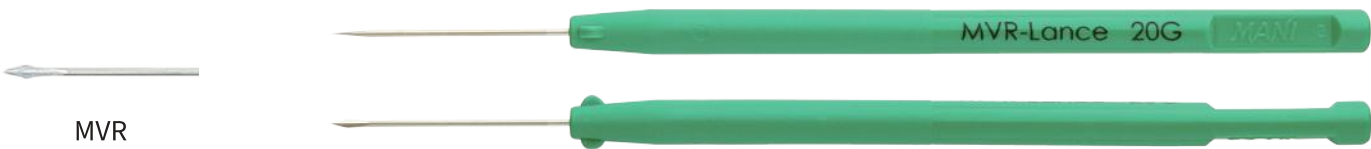
Head Length

- Designed to deliver exceptional precision 1.0mm side port incision.
- Angled; 30 or 45 degree depend on condition of your patient and your preference.
- Excellent controllability with shorter (3.5mm) head length.
Effective for patients who have sunken/deep-set eye (enophthalmos) or narrow lid fissure.
- Stress-free incision with ultimate sharpness.

MVR Knife

○Main Application: Side port, Scleral port

Angle = 45°



Actual size

ORDER No.	Description	6pcs/box
MVR19	MVR-Lance 19G (1.5mm)	
MVR20	MVR-Lance 20G (1.2mm)	
MVR23	MVR-Lance 23G (0.9mm)	
MVR24	MVR-Lance 24G (0.8mm)	
MVR25	MVR-Lance 25G (0.55mm) Usable for creating a 25G sclerotomy. / Compatible for insertion into a 23G cannula.	
MVR19A	MVR-Angled 19G (1.5mm)	
MVR20A	MVR-Angled 20G (1.2mm)	
MVR21A	MVR-Angled 21G (1.1mm)	
MVR23A	MVR-Angled 23G (0.9mm)	※
MVR24A	MVR-Angled 24G (0.8mm)	
MVR23AD	MVR-Angled 23G (0.7mm)	※
MPK25	Port Knife 25G (0.45mm) Designed for insertion into a 25G cannula and for use in membrane dissection, etc.	
MPK27	Port Knife 27G (0.40mm) Designed for insertion into a 27G cannula and for use in membrane dissection, etc.	

※ Similar ORDER No. The difference is blade width.

Safety MVR Knife

○Main Application: Side port, Scleral port

Angle = 45°



Actual size

ORDER No.	Description	6pcs/box
MVR20ASK	MVR-Angled 20G (1.2mm) (Safety)	
MVR21ASK	MVR-Angled 21G (1.1mm) (Safety)	
MVR23ASK	MVR-Angled 23G (0.9mm) (Safety)	
MVR24ASK	MVR-Angled 24G (0.8mm) (Safety)	

Please refer to the page 5 and the back page for Handling Instrustions for Safety Type.

Crescent Knife

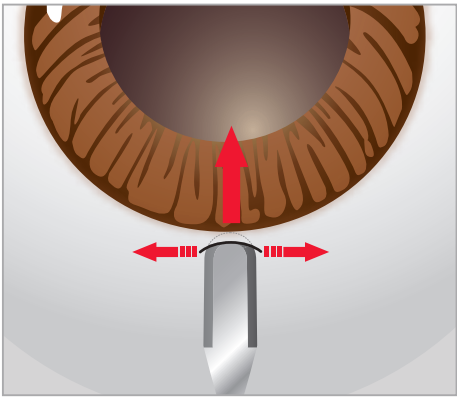
○Main Application: Scleral tunnel, Scleral flap

Angle = 60°

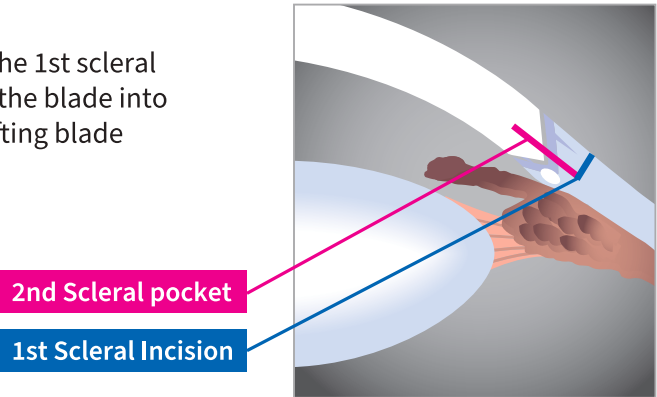


Actual size

ORDER No.	Description	6pcs/box
MCU20	Crescent Bevel Up (2.0mm)	
MCU26	Crescent Bevel Up (2.3mm)	
MCD26	Crescent Bevel Down (2.3mm)	
MCS26	Crescent Straight (2.3mm)	



Insert the Knife into the 1st scleral incision and forward the blade into clear cornea with shifting blade from side to side.

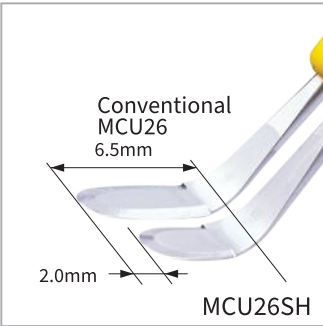


Short-Head Crescent Knife

○Main Application: Scleral tunnel, Scleral flap

Angle = 60°

Comparison with conventional products



Actual size

ORDER No.	Description	6pcs/box
MCU20SH	Crescent Bevel Up (2.0mm) (Short-Head)	
MCU26SH	Crescent Bevel Up (2.3mm) (Short-Head)	

Safety Crescent Knife

○Main Application: Scleral tunnel, Scleral flap

Angle = 60°



Actual size

ORDER No.	Description	6pcs/box
MCU20SK	Crescent Bevel Up (2.0mm) (Safety)	
MCU26SK	Crescent Bevel Up (2.3mm) (Safety)	

Please refer to the page 5 and the back page for Handling Instrustions for Safety Type.

Mini Crescent Knife

○Main Application: Scleral flap

Angle = 25°



Actual size

ORDER No.	Description	6pcs/box
MCB10	Crescent Double Bevel (1.0mm)	
MCB12	Crescent Double Bevel (1.25mm)	

R Slit Knife (Implant)

○Main Applicatoin: IOL enlargement

Angle = 45°

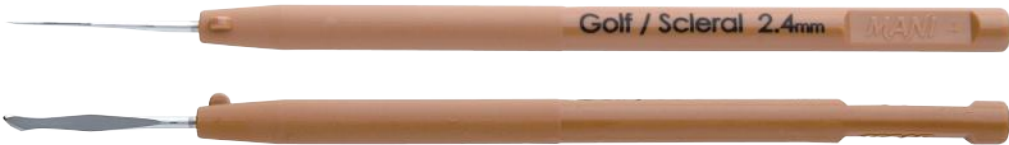


Actual size

ORDER No.	Description	6pcs/box
MRS26	R Slit Angled 2.6mm	
MRS32	R Slit Angled 3.2mm	
MRS35	R Slit Angled 3.5mm	
MRS37	R Slit Angled 3.75mm	
MRS41	R Slit Angled 4.1mm	
MRS52	R Slit Angled 5.2mm	
MRS55	R Slit Angled 5.5mm	

Golf/Scleral Knife

○Main Application: Scleral flap, Pterygium



Actual size

ORDER No.	Description	6pcs/box
MGL24	Golf/Scleral 2.4mm	

LRI Knife

○Main Application: Limbal relaxing incision (LRI)



Actual size

ORDER No.	Description	6pcs/box
MLR50	LRI 500μm (0.50mm)	
MLR55	LRI 550μm (0.55mm)	
MLR60	LRI 600μm (0.60mm)	
MLR65	LRI 650μm (0.65mm)	

Depth Knife

○Main Application: Scleral groove incision



Actual size

ORDER No.	Description	6pcs/box
MDP30	Depth 300μm (0.30mm)	
MDP35	Depth 350μm (0.35mm)	